



COLORADO STATE UNIVERSITY
EXTENSION

April 16, 2020

Google Calendar

4-H THURSDAY BLAST



Important Dates

April 19-25

National Volunteer Week

April 20

Market Rabbit Breeding Day

April 22

MQA Training

April 30

Swine ID Form Due

May 1

Dog, Cat, Horse, Alpaca/Llama due in
4Honline

May 5

Goat & Sheep ID Form Due

May 18-May 21

Super Contest Week



COVID-19 UPDATE

The 4-H restrictions on face-to-face meeting and programming are still officially in effect until May 15th. However, leaders and youth should begin to prepare for that restriction to be lengthened through the month of June. The Extension office is working on transforming all April, May, and June activities and workshops to a digital format and we appreciate your patience as we navigate these changes.

**National 4-H
Volunteer Week**
April 19th-25th



4-H Members: Your leaders work tirelessly year round to make sure you are learning, being supported, and achieving your goals!! Be sure to take some time next week to make sure they know how much you appreciate them! Send them a thank you card or note, get the club members together and make an audio "collage" of everyone saying thank you, send them an email or a fun picture of you and your project. They do this for YOU, make sure they know you appreciate all of their hard work and dedication!



Chick Adoption April 17

Due to public health concerns, adoptions will be made by appointment only. Please contact madelyn.granos@colostate.edu to set-up an appointment or if you have questions.

[Chick Adoption Info](#)



REGISTRATION & MORE
INFORMATION COMING SOON!

[Contest Information](#)

Super Contest Week

"Super Saturday" is back and better than ever! Now we will have a week of digital fun!

Youth can participate in one contest or all three!

**Cake Decorating | Creative Cooks
Speech & Demo Contests**

[website for contests](#)



4-H'er of the Week



Cards

During these challenging times we want to use our 4-H power to spread positivism!

We will be sending virtual thank

The Douglas County Extension Office wants to feature a 4-H'er of the week on their social media sites!
Winners will receive a prize from the office!

[4-H'er of the Week information](#)

[Upload Photo Here](#)

you cards and cards of encouragement to hospital workers, first responders, nursing home patients, grocery store employees or any other workers on behalf of Douglas County 4-H!

[Upload card or picture of card Here](#)

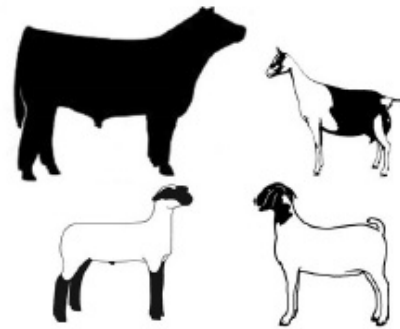


Adams County 4-H: Virtual 4-H Livestock Workshop Series

Begins today April 16 at 4pm

3 Week series will cover beef, goat, swine, and sheep market projects

[Virtual Showmanship Clinic](#)



MQA News

Digital zoom training session will be held on Wednesday April 22nd from 5:30-8:00 PM

[MQA Information](#)

Virtual Animal ID

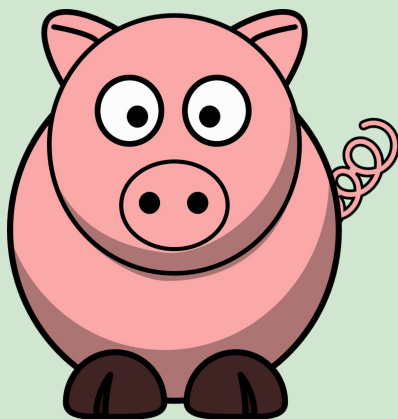
For our animal projects that typically get tagged-in or checked on tag-in days.
(Companion animals and all other animals that typically do virtual tag-ins are still due May 1st because of State rules - dog, horse, cat, alpaca/llama).

Thank you for your patience as we work out the logistics of keeping our 4-H year moving forward the best we can.



- **Swine:** Tag pickups are postponed until some of the COVID-19 restrictions are lifted.
- Please fill out the Virtual Animal ID forms and upload to 4HOnline by April 30th.
- When animal ID's are submitted each animal will be assigned their tag number.
- **IMPORTANT - ANIMALS WHO DO NOT GET A VIRTUAL ANIMAL ID WILL NOT BE ELIGIBLE FOR COUNTY FAIR.**
- Once the extension office has more updates on current restrictions we will arrange for tag pickups.
- If unable to upload to 4Honline, please submit your virtual animal ID to Kirsten by April 30th at kirsten.cowan@colostate.edu

Swine ID Form



- **Market and Breeding Goat and Sheep:** Tag-in days have been postponed due to the COVID-19 restrictions.
- Please fill out the Virtual Animal ID forms and upload to 4HOnline by May 5th.
- When animal ID's are submitted each animal will be assigned their tag number.
- **IMPORTANT - ANIMALS WHO DO NOT GET A VIRTUAL ANIMAL ID WILL NOT BE ELIGIBLE FOR COUNTY FAIR.**
- Once the extension office has more updates on current restrictions we will arrange for a tag-in.
- If unable to upload to 4Honline, please submit your virtual animal ID to Kirsten by May 5th at kirsten.cowan@colostate.edu

Breeding Sheep ID Form

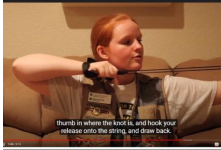
Market Sheep ID Form

Market Goat ID Form

Non-Market Goat Form

Shooting Sports Resources

The Shooting Sports Ambassadors have been hard at work. making educational videos for all of you! Be sure to check them out! If you are interested in making your own little video to help support your fellow Douglas County 4-H members please let the extension office know!

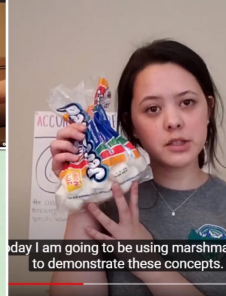


M.A.T.

- Muzzle

- Action

- Trigger



SHOOTING SPORTS
COLORADO STATE UNIVERSITY
EXTENSION

SS Exhibits

M.A.T. (Muzzle, Action, Trigger)

Archery "At the Range"

STEM Activity - Accuracy and Precision

Archery – Release Practice String

4-H Shooting Sports – Record Book Tips



Travel to North Dakota Virtual Showmanship Clinic

including: sheep, swine, market/dairy
goat, poultry, horse, rabbit

[North Dakota information](#)



Pet-Palooza

Presented by District VI

Virtual Cat and Dog Show

Open to all 4-H members

[Pet-Palooza](#)



Rabbit Meat Pens

April 20 - Breeding Day, NO
EARLIER!! Pens member must
own the doe used for breeding.
One may use a buck they do not
own

If you have any questions contact

Market Animal Budget Plan



How much should I spend on my
project animal(s) this year? How
many project animal(s) should I
purchase this year? By completing
the following worksheet, you will learn
to make informed decisions about
how much your project will cost and
how you can strive for profit. This
worksheet is modeled based on
market values of animals. It is
important for 4-Hers to recognize the
realities of producing market animals
in today's industries, as well as the
importance of securing a buyer.

Service Project Opportunity

Keep sewing. As a community we have sewn over 3,000 masks. South Metro would like 5,000.

South Metro is so appreciative.

Thank you again for doing your part and helping South Metro Fire Rescue!

If you are healthy and able to be an angel for us, please email

Colleen.Potton@southmetro.org and let her know if you would like to cut or sew.



[YouTube Instructions](#)

[Mask Paper Directions](#)



www.shutterstock.com • 374355658

4-H School Scholarships Available

Attention High School Seniors!!!!

[Colorado 4-H Foundation Scholarships](#)



**COLORADO STATE UNIVERSITY
EXTENSION**

**COVID-19 Resources to Get or Give Help
Great advice from CSU**

[Federal Resource Guide](#)

[Document from CSU](#)

Douglas County 4-H & COVID-19 Update

In accordance with CSU and State 4-H Guidelines, all face to face 4-H programming is now suspended until May 15th.

The extension office will be working with leaders to offer 4-H digitally. We know this is new, different, and uncharted territory and we appreciate your patience and understanding as we make this shift.

If you know of a family in our community that does not have reliable access to email or the internet, please let us or your club leader know so we can make sure to reach all of our families.

Registration for the 2019-2020 year has closed for 4-H. However, Cloverbuds, 5-7 year olds, may still register.

Animal E-Records

General Project E-Records

CSU 4-H Exhibit Requirement

Animal Care and Housing Form



4-H Youth in Action Awards

National 4-H Council introduced a new application season for the 4-H Youth in Action program! We've heard from Extension professionals and students that spring is a

better time for youth to apply for scholarships, so we've shifted our application season to better support 4-H'ers and professionals alike. From now until April 27, youth can share their stories of developing passion, finding purpose, and inspiring others by [applying here](#) for the 4-H Youth in Action Awards for a chance to earn a \$5,000 scholarship and a trip to Washington, D.C.!

4-H OFFICE STAFF

Kirsten Cowan - 4-H Livestock Agent

Madelyn Granos - 4-H Program Associate

Sylvia Worcester- Office Administrative Assistant

Kyle Christensen - CSU Extension Director



Extension programs are available to all without
discrimination.